



DAILY AIR MONITORING REPORT

Florence C&D Landfill – Air Monitoring

Date : 2026-03-27

Table 1 : Weather Summary

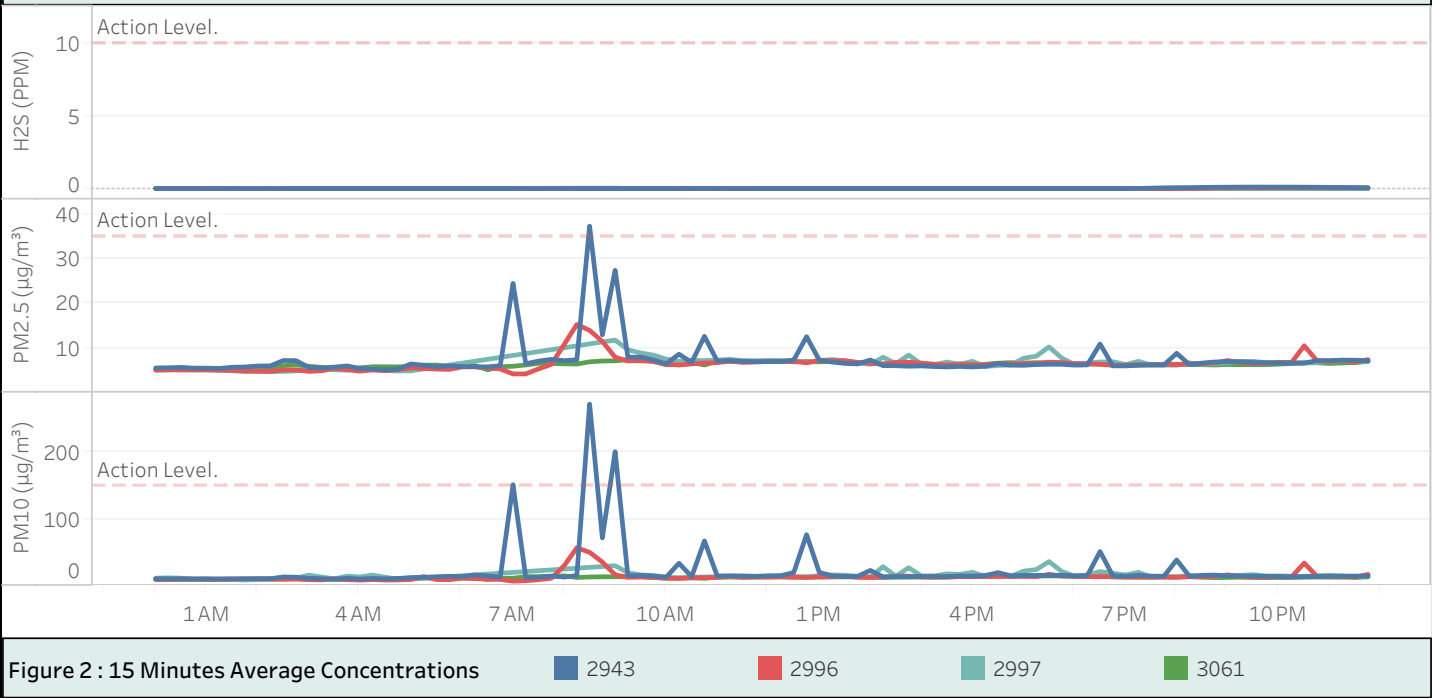
Wind Speed (MPH)	Wind Direction				Temperature (°F)	Relative Humidity (%)	Barometer (inHg)
0.134 to 5.525	2943 SE	3061 SW	2996 SW	2997 NE	Min : 57.92 Max : 100.0	Min : 35.70 Max : 99.00	Min : 29.97 Max : 30.24

Table 2 : Monitoring Summary

Site Action Level :	PM10 : 150 µg/m ³	PM2.5 : 35 µg/m ³	H2S : 10 PPM			
AQ-SN	Avg. PM10 Daily (µg/m ³)	Max. PM10-15-min Avg (µg/m ³)	Avg. PM2.5 Daily (µg/m ³)	Max. PM2.5-15-min Avg (µg/m ³)	Avg. H2S Daily (PPM)	Max. H2S-15-min Avg (PPM)
2943	22.6	271.9	7.4	37.4	0.016	0.104
2996	13.7	56.8	6.5	15.3	0.009	0.070
2997	15.0	36.2	6.6	11.8	0.006	0.041
3061	12.3	14.8	6.3	7.5	0.001	0.010



Figure 1 : Monitoring Locations





DAILY AIR MONITORING REPORT

Florence C&D Landfill – Air Monitoring

Date : 2026-03-27

Wind Rose Chart 2943

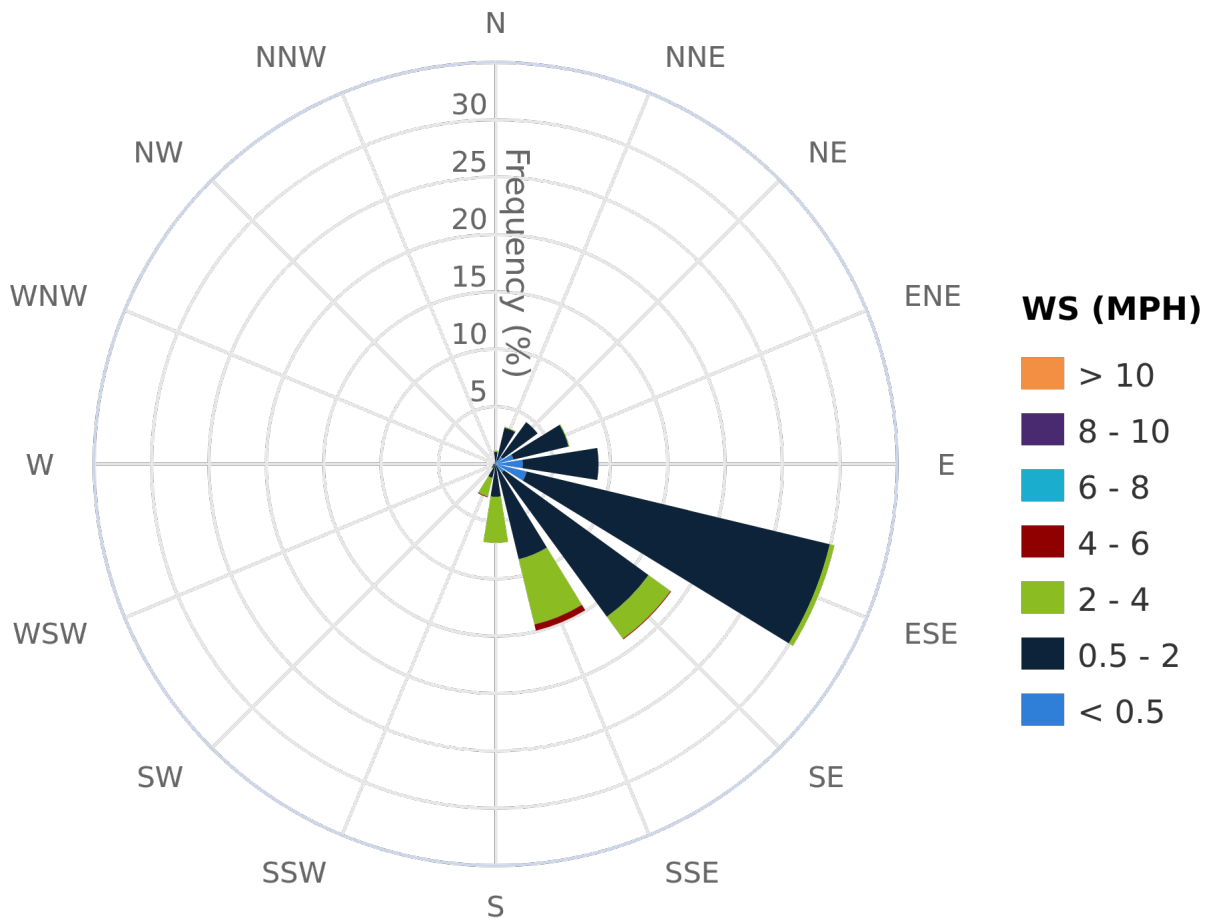


Figure 3 : Wind Rose Chart (WS in MPH)



DAILY AIR MONITORING REPORT

Florence C&D Landfill – Air Monitoring

Date : 2026-03-27

Wind Rose Chart 3061

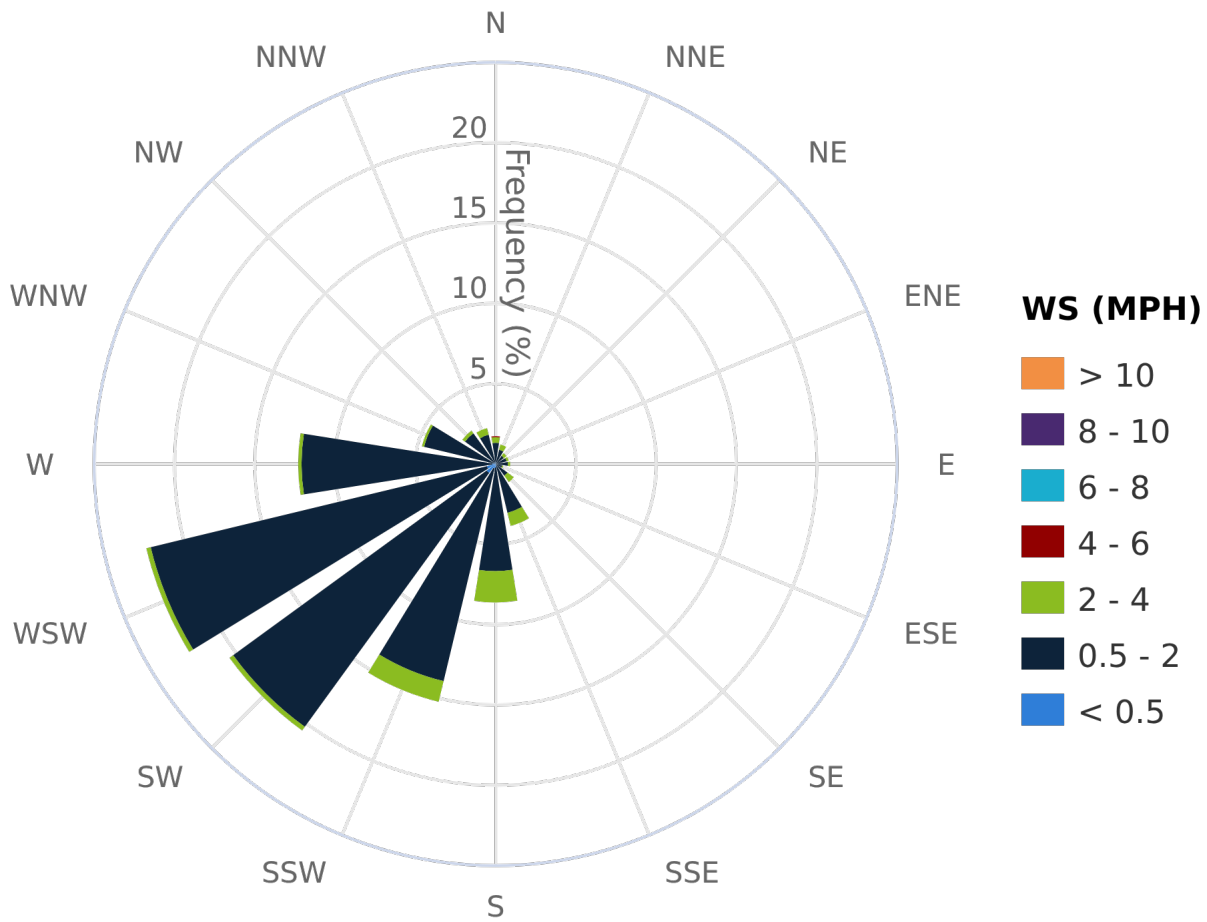


Figure 3 : Wind Rose Chart (WS in MPH)



DAILY AIR MONITORING REPORT

Florence C&D Landfill – Air Monitoring

Date : 2026-03-27

Wind Rose Chart 2996

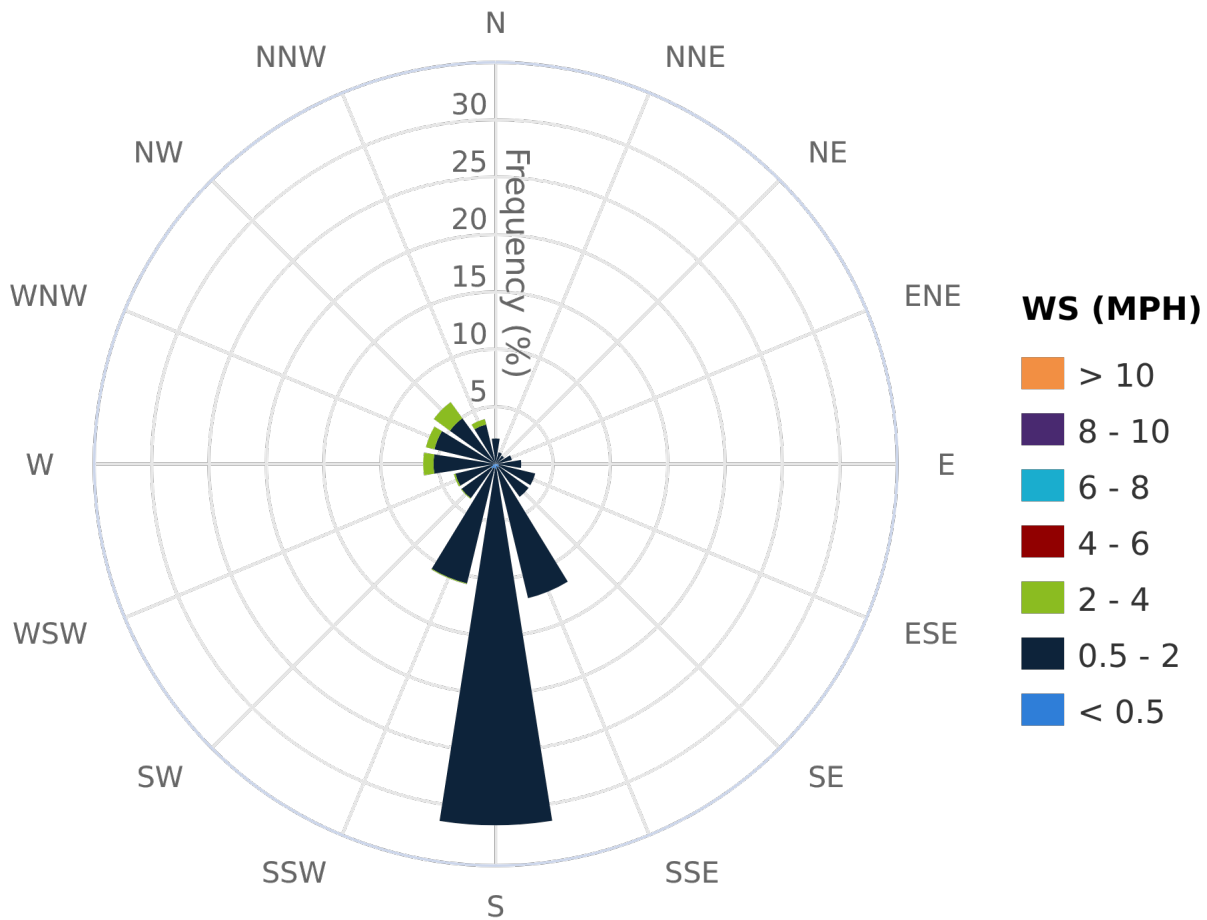


Figure 3 : Wind Rose Chart (WS in MPH)



DAILY AIR MONITORING REPORT

Florence C&D Landfill – Air Monitoring

Date : 2026-03-27

Wind Rose Chart 2997

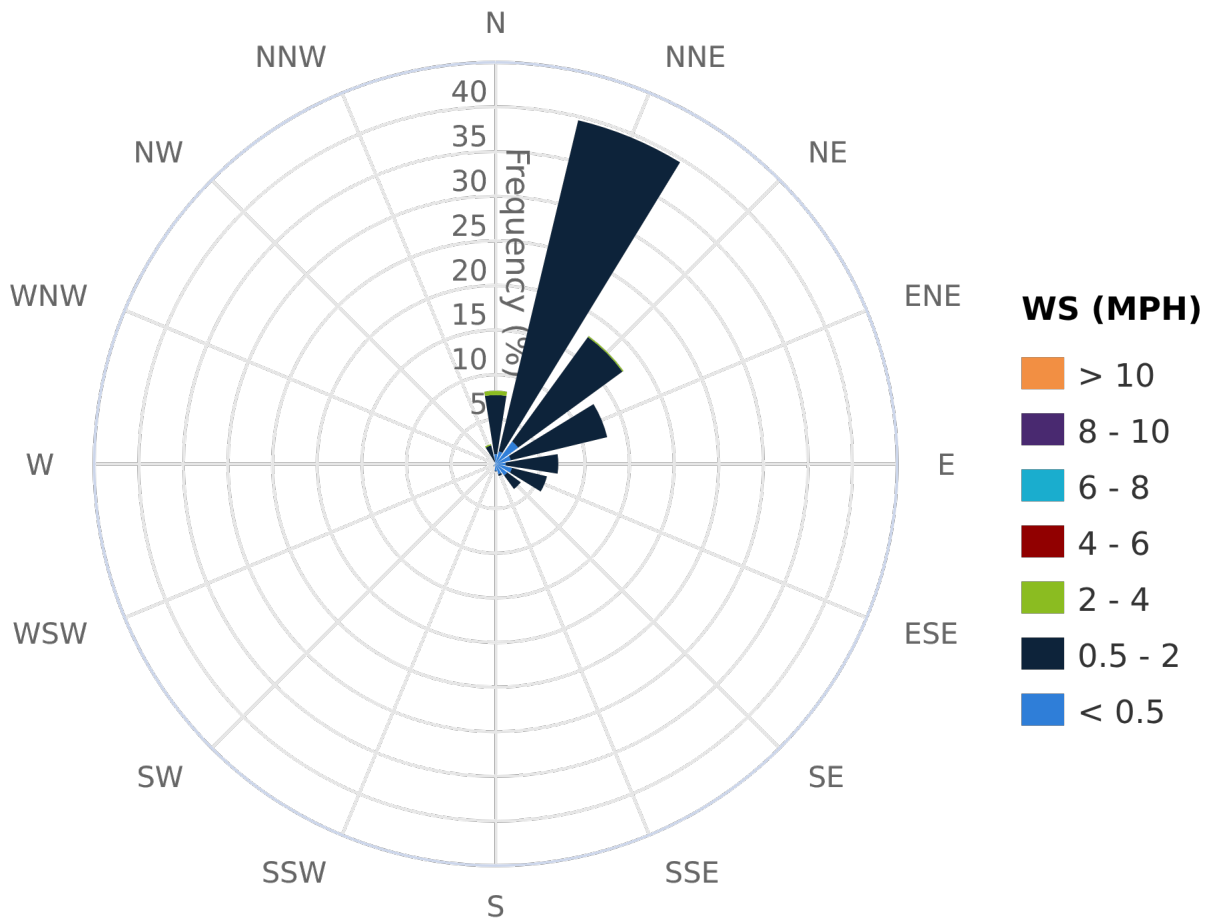


Figure 3 : Wind Rose Chart (WS in MPH)



DAILY AIR MONITORING REPORT

Florence C&D Landfill – Air Monitoring

Date : 2026-03-27

Table 3 : 15 Minute Average Concentrations (AM)

	Avg. 2943 - PM10 (µg/m³)	Avg. 3061 - PM10 (µg/m³)	Avg. 2997 - PM10 (µg/m³)	Avg. 2996 - PM10 (µg/m³)	Avg. 2943 - PM2.5 (µg/m³)	Avg. 3061 - PM2.5 (µg/m³)	Avg. 2996 - PM2.5 (µg/m³)	Avg. 2997 - PM2.5 (µg/m³)	Avg. 2943 - H2S (PPM)	Avg. 3061 - H2S (PPM)	Avg. 2996 - H2S (PPM)	Avg. 2997 - H2S (PPM)
00:00:00	10.5	9.3	11.4	9.5	5.5	5.1	5.1	5.3	0.000	0.000	0.020	0.000
00:15:00	10.4	9.4	11.9	9.8	5.6	5.1	5.1	5.3	0.000	0.000	0.016	0.000
00:30:00	10.4	9.4	11.4	9.8	5.7	5.2	5.1	5.2	0.000	0.000	0.015	0.000
00:45:00	10.1	9.5	10.2	10.0	5.5	5.2	5.1	5.0	0.000	0.000	0.012	0.000
01:00:00	10.4	9.4	10.2	9.6	5.5	5.3	5.1	5.1	0.000	0.000	0.008	0.000
01:15:00	10.3	9.3	9.1	9.7	5.4	5.2	5.1	5.0	0.000	0.000	0.007	0.000
01:30:00	10.3	9.3	9.3	10.1	5.7	5.2	5.0	4.9	0.000	0.000	0.004	0.000
01:45:00	10.4	9.2	8.7	10.4	5.8	5.1	4.9	4.7	0.000	0.000	0.003	0.000
02:00:00	10.6	10.0	9.2	10.4	6.0	5.4	4.8	4.9	0.000	0.000	0.003	0.000
02:15:00	10.6	10.0	10.9	9.8	6.0	5.7	4.8	4.7	0.000	0.000	0.000	0.000
02:30:00	13.2	10.2	11.2	9.8	7.2	6.1	5.1	4.8	0.000	0.000	0.000	0.000
02:45:00	12.8	10.7	11.5	9.9	7.2	6.2	5.1	4.9	0.000	0.000	0.000	0.000
03:00:00	11.3	11.4	15.9	9.1	5.7	5.9	4.8	5.1	0.000	0.000	0.000	0.000
03:15:00	10.6	10.2	13.1	8.8	5.5	5.7	4.9	5.3	0.000	0.000	0.000	0.000
03:30:00	9.9	9.7	10.4	10.6	5.7	5.3	5.4	5.1	0.000	0.000	0.000	0.000
03:45:00	11.2	9.1	14.5	9.2	6.0	5.3	5.2	5.0	0.000	0.001	0.000	0.000
04:00:00	10.1	9.8	13.2	8.5	5.4	5.6	4.8	5.3	0.000	0.001	0.000	0.000
04:15:00	11.0	11.1	16.0	9.2	5.3	5.8	5.1	5.3	0.000	0.000	0.000	0.000
04:30:00	10.3	11.9	12.7	8.6	5.1	5.8	4.9	5.0	0.000	0.000	0.000	0.000
04:45:00	10.9	10.4	9.3	8.7	5.3	5.8	5.2	4.9	0.000	0.000	0.000	0.000
05:00:00	12.3	10.4	10.0	9.5	6.4	5.8	5.6	4.9	0.000	0.000	0.000	0.000
05:15:00	12.7	11.4		13.7	6.2	6.2	5.4		0.000	0.000	0.000	
05:30:00	13.5	12.1		9.3	5.8	6.2	5.3		0.000	0.000	0.000	
05:45:00	14.2	10.8		9.1	6.0	5.9	5.2		0.000	0.000	0.000	
06:00:00	13.7	13.1		11.2	5.8	6.3	5.8		0.000	0.000	0.000	
06:15:00	16.2	12.0		10.7	5.8	6.1	5.8		0.000	0.000	0.000	
06:30:00	14.8	9.2		10.0	5.8	5.1	5.5		0.000	0.000	0.000	
06:45:00	13.0	11.1		9.5	6.1	5.8	5.3		0.000	0.000	0.000	
07:00:00	151.3	11.3		6.9	24.5	5.9	4.2		0.000	0.000	0.000	
07:15:00	12.3	13.7		7.5	6.5	6.2	4.2		0.000	0.000	0.000	
07:30:00	12.9	13.5		9.1	7.1	6.6	5.3		0.000	0.000	0.000	
07:45:00	14.5	14.2		11.3	7.5	6.5	6.3		0.000	0.000	0.000	
08:00:00	13.1	14.8		29.8	7.2	6.5	10.8		0.000	0.000	0.000	
08:15:00	15.2	12.4		56.8	7.4	6.4	15.3		0.000	0.000	0.000	
08:30:00	271.9	13.2		50.1	37.4	6.9	14.0		0.000	0.000	0.000	
08:45:00	71.6	13.4		35.4	13.0	7.1	11.5		0.000	0.000	0.000	
09:00:00	200.7	13.5	30.0	16.4	27.5	7.1	7.9	11.8	0.000	0.000	0.000	0.035
09:15:00	15.2	13.5	19.6	12.6	8.0	7.4	7.1	9.6	0.000	0.000	0.000	0.004
09:30:00	15.5	13.7	16.4	13.0	8.0	7.5	7.1	8.9	0.000	0.000	0.000	0.006
09:45:00	14.4	12.5	15.4	12.4	7.3	7.0	7.0	8.4	0.000	0.000	0.000	0.001
10:00:00	12.7	11.2	13.0	11.5	6.5	6.2	6.4	7.5	0.000	0.000	0.000	0.000
10:15:00	33.7	11.7	11.8	10.9	8.6	6.5	6.2	7.0	0.000	0.000	0.000	0.000
10:30:00	13.7	12.0	12.9	11.9	6.8	6.8	6.4	7.3	0.006	0.000	0.000	0.000
10:45:00	67.1	11.2	13.1	12.1	12.6	6.2	6.7	7.2	0.003	0.000	0.000	0.000
11:00:00	14.7	12.7	13.5	12.5	7.1	7.0	6.7	7.3	0.005	0.000	0.000	0.000
11:15:00	15.0	12.9	13.8	14.2	7.2	7.0	7.1	7.5	0.003	0.000	0.000	0.000
11:30:00	14.7	12.9	13.6	12.6	7.0	7.0	6.8	7.2	0.001	0.000	0.000	0.000
11:45:00	14.2	13.0	13.2	13.3	7.0	7.0	6.9	7.2	0.000	0.000	0.000	0.005



DAILY AIR MONITORING REPORT

Florence C&D Landfill – Air Monitoring

Date : 2026-03-27

Table 3 : 15 Minute Average Concentrations (PM)

	Avg. 2943 - PM10 (µg/m³)	Avg. 3061 - PM10 (µg/m³)	Avg. 2997 - PM10 (µg/m³)	Avg. 2996 - PM10 (µg/m³)	Avg. 2943 - PM2.5 (µg/m³)	Avg. 3061 - PM2.5 (µg/m³)	Avg. 2996 - PM2.5 (µg/m³)	Avg. 2997 - PM2.5 (µg/m³)	Avg. 2943 - H2S (PPM)	Avg. 3061 - H2S (PPM)	Avg. 2996 - H2S (PPM)	Avg. 2997 - H2S (PPM)
12:00:00	14.9	13.2	14.3	12.9	7.0	7.0	7.0	7.2	0.000	0.000	0.000	0.007
12:15:00	15.1	13.5	14.6	13.3	7.0	7.1	7.0	7.2	0.000	0.000	0.000	0.007
12:30:00	19.8	12.8	13.8	13.0	7.3	6.9	7.0	7.1	0.000	0.000	0.000	0.004
12:45:00	76.4	13.3	13.0	12.3	12.6	7.0	6.7	6.8	0.000	0.000	0.000	0.000
13:00:00	20.0	12.9	15.3	13.5	7.3	6.9	7.2	7.2	0.000	0.000	0.000	0.000
13:15:00	15.0	13.2	16.3	13.5	6.9	7.0	7.2	7.4	0.000	0.000	0.000	0.000
13:30:00	13.8	13.3	15.8	14.4	6.6	6.9	7.2	7.2	0.000	0.000	0.000	0.000
13:45:00	14.2	13.1	14.1	12.8	6.4	6.8	6.8	6.7	0.000	0.000	0.000	0.000
14:00:00	23.0	12.8	13.1	12.4	7.3	6.6	6.6	6.3	0.000	0.000	0.000	0.000
14:15:00	13.3	12.6	28.6	12.8	6.0	6.4	6.4	7.9	0.000	0.000	0.000	0.000
14:30:00	13.8	12.7	14.4	14.3	6.0	6.4	6.8	6.5	0.000	0.000	0.000	0.000
14:45:00	13.6	12.9	27.0	14.4	5.9	6.4	6.8	8.4	0.000	0.000	0.000	0.000
15:00:00	14.1	13.0	14.8	13.3	6.0	6.4	6.6	6.4	0.000	0.000	0.000	0.000
15:15:00	13.9	12.8	14.9	12.8	5.9	6.3	6.4	6.3	0.000	0.000	0.000	0.000
15:30:00	13.7	13.2	17.8	13.0	5.8	6.3	6.2	6.9	0.000	0.000	0.000	0.000
15:45:00	14.8	13.8	17.0	13.7	5.9	6.5	6.3	6.3	0.000	0.000	0.000	0.000
16:00:00	14.5	13.7	20.2	13.8	5.8	6.4	6.3	7.0	0.000	0.000	0.000	0.000
16:15:00	15.4	13.7	13.9	13.9	5.9	6.4	6.3	5.9	0.000	0.000	0.000	0.000
16:30:00	19.6	14.7	14.0	14.1	6.5	6.6	6.5	6.1	0.000	0.000	0.000	0.000
16:45:00	15.0	14.5	14.1	13.8	6.2	6.7	6.5	6.2	0.000	0.000	0.000	0.000
17:00:00	15.6	14.6	21.9	14.0	6.1	6.6	6.5	7.7	0.000	0.000	0.000	0.000
17:15:00	15.5	14.5	24.3	13.8	6.3	6.7	6.6	8.2	0.000	0.000	0.000	0.000
17:30:00	15.5	14.7	36.2	17.1	6.4	6.6	6.8	10.3	0.000	0.000	0.000	0.000
17:45:00	15.7	14.7	21.4	14.5	6.4	6.6	6.8	7.8	0.000	0.000	0.000	0.000
18:00:00	15.0	13.9	14.3	14.3	6.2	6.5	6.5	6.3	0.000	0.000	0.000	0.000
18:15:00	15.1	14.1	16.4	13.7	6.2	6.4	6.5	6.6	0.000	0.000	0.000	0.000
18:30:00	51.2	13.9	21.2	13.6	10.9	6.4	6.4	6.9	0.000	0.000	0.000	0.000
18:45:00	14.9	13.2	18.7	13.7	6.0	6.2	6.2	6.9	0.000	0.000	0.000	0.000
19:00:00	14.3	12.9	16.1	13.1	6.0	6.1	6.2	6.3	0.000	0.001	0.000	0.000
19:15:00	15.5	12.9	20.1	13.1	6.1	6.2	6.3	7.0	0.011	0.005	0.000	0.000
19:30:00	14.4	12.8	13.2	12.8	6.3	6.2	6.3	6.2	0.032	0.007	0.000	0.004
19:45:00	14.2	13.5	13.1	12.9	6.2	6.3	6.3	6.2	0.052	0.008	0.000	0.012
20:00:00	38.6	13.1	13.3	12.7	8.8	6.4	6.3	6.2	0.065	0.009	0.001	0.016
20:15:00	14.3	13.6	15.5	13.7	6.3	6.3	6.4	6.7	0.068	0.009	0.008	0.020
20:30:00	15.7	12.9	14.1	13.4	6.6	6.3	6.5	6.4	0.082	0.009	0.022	0.024
20:45:00	16.0	12.1	14.0	14.0	6.9	6.2	6.7	6.5	0.092	0.009	0.043	0.032
21:00:00	14.8	12.4	15.5	16.3	7.0	6.3	7.2	6.7	0.097	0.010	0.051	0.034
21:15:00	14.7	12.8	15.5	13.7	7.0	6.3	6.7	7.0	0.101	0.009	0.058	0.040
21:30:00	14.4	12.4	16.8	13.0	6.8	6.3	6.5	7.0	0.104	0.009	0.063	0.041
21:45:00	14.2	12.2	14.6	12.9	6.7	6.3	6.5	6.7	0.104	0.008	0.067	0.039
22:00:00	13.9	12.4	14.8	13.2	6.6	6.4	6.8	6.8	0.103	0.008	0.068	0.036
22:15:00	13.4	12.4	14.3	13.2	6.6	6.5	6.8	6.8	0.102	0.007	0.070	0.026
22:30:00	13.6	12.8	14.1	34.0	6.6	6.7	10.5	6.7	0.098	0.007	0.068	0.025
22:45:00	14.0	13.0	15.1	14.0	7.2	6.7	7.1	6.8	0.093	0.006	0.069	0.022
23:00:00	14.3	12.8	15.6	13.7	7.2	6.5	7.0	7.0	0.084	0.004	0.063	0.015
23:15:00	14.5	12.8	14.6	14.3	7.3	6.7	7.3	7.2	0.077	0.004	0.061	0.013
23:30:00	14.5	12.5	13.5	12.9	7.3	6.7	6.9	7.0	0.068	0.004	0.056	0.010
23:45:00	14.5	13.3	14.9	17.1	7.1	7.0	7.4	7.1	0.062	0.003	0.050	0.005

